

simCNC software installation guide

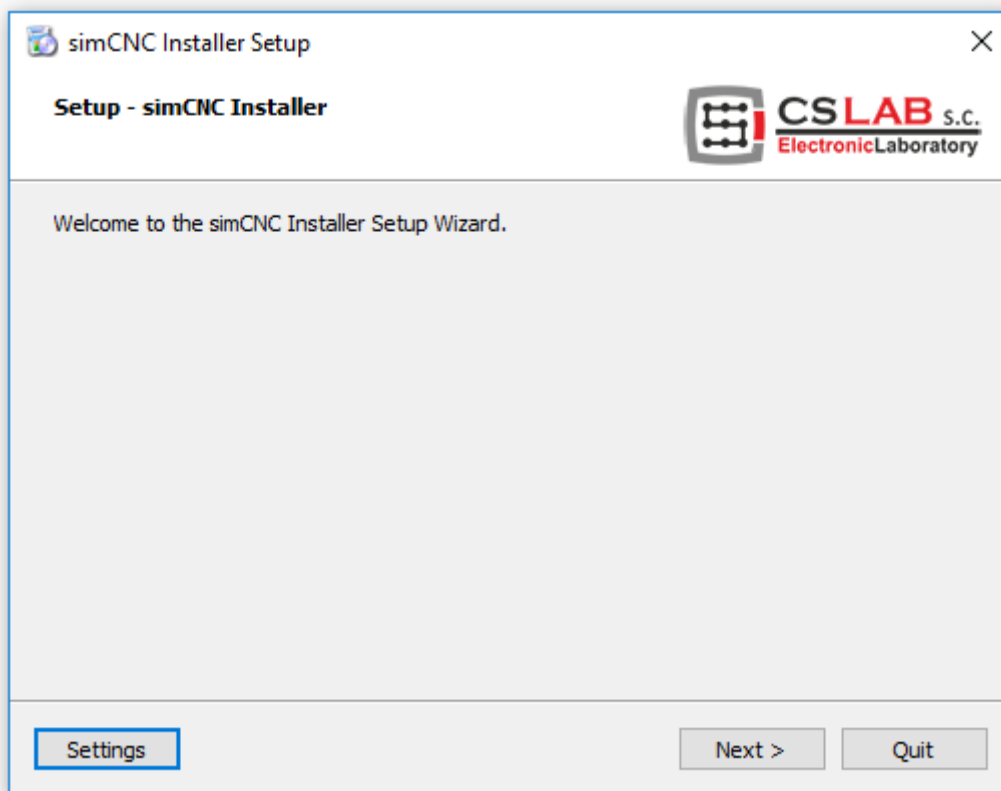


I. SimCNC software installation

Download simCNC software here: www.cs-lab.eu, DOWNLOAD section. Unpack and run the installation utility. For the installation process internet connection is required to provide installation of all current components needed for proper simCNC operation.

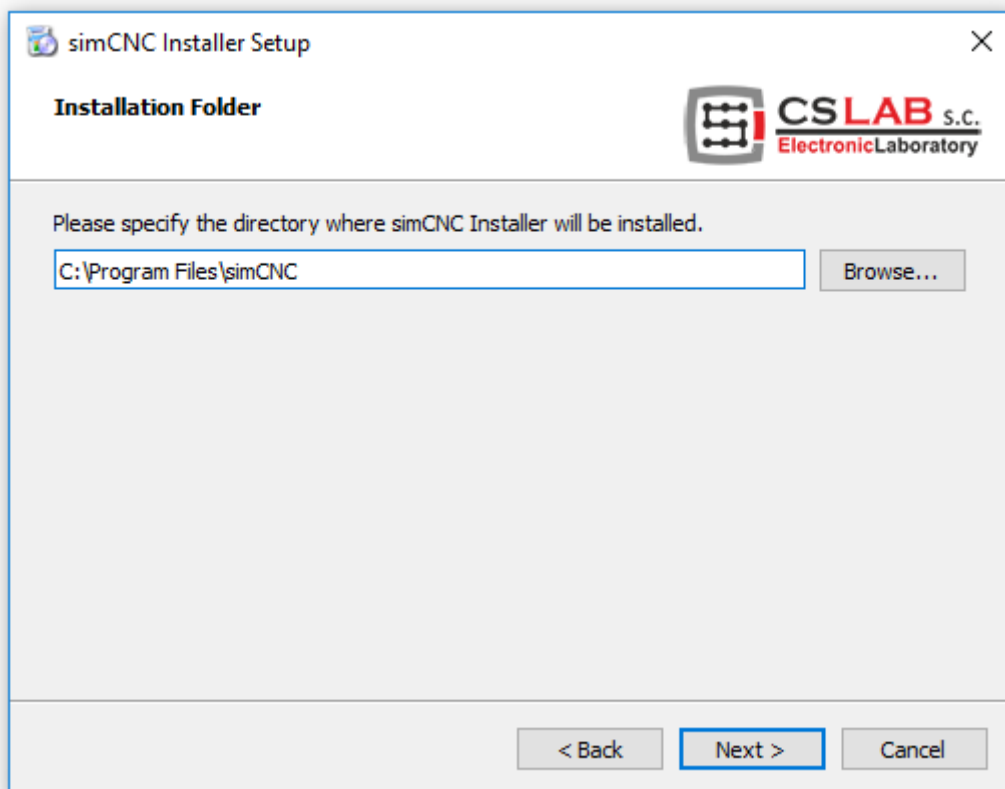
STEP 1

In this window press "Next" to go to a next window.



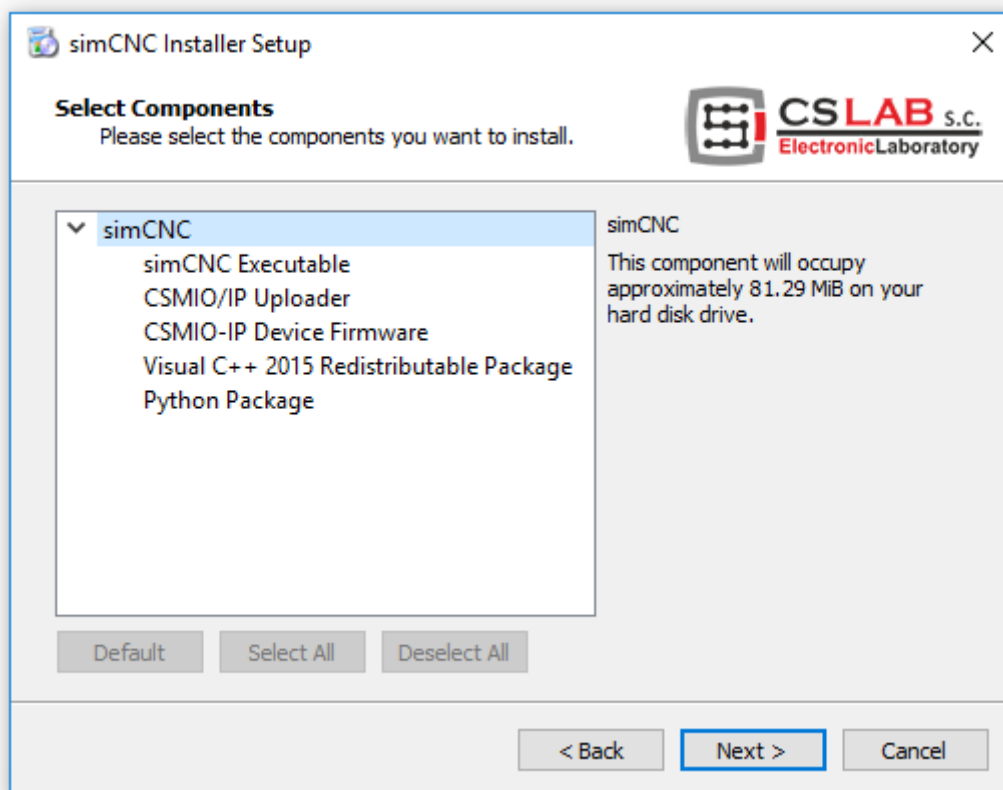
STEP 2

In this window you can chose location for the simCNC software.
It is recommended to keep the default location.



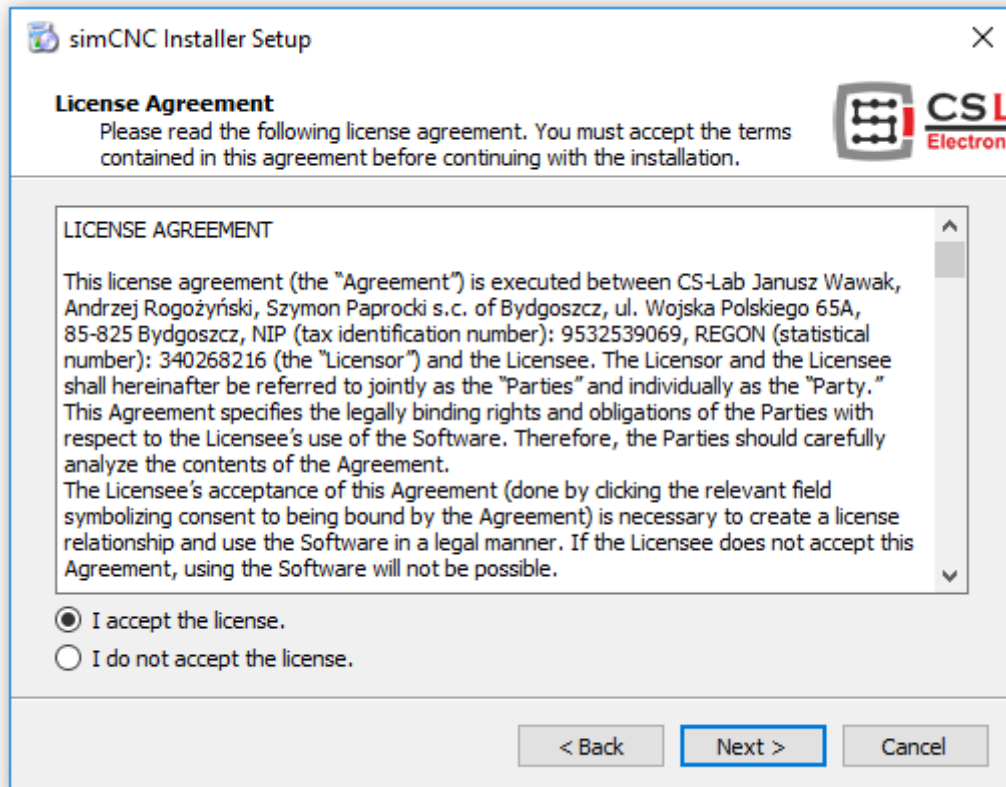
STEP 3

In the current view got to a next window by clicking „Next”.



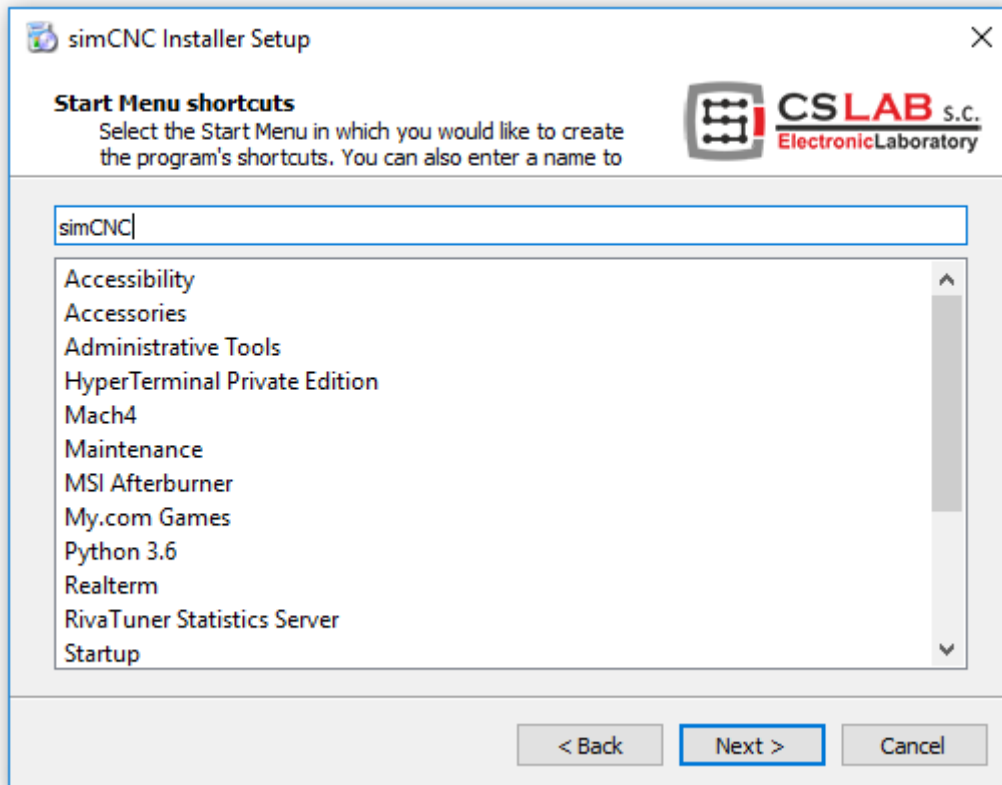
STEP 4

In this window you should read and accept license agreement to go to the next step.



STEP 5

In the current view got to a next window by clicking „Next”.



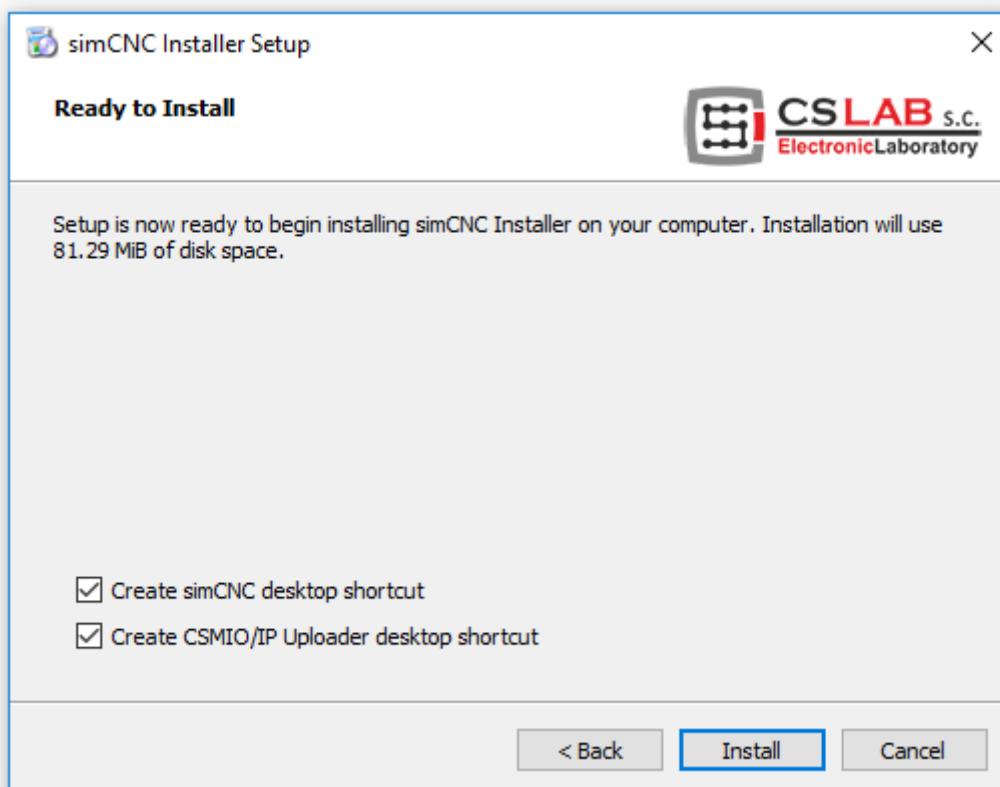
STEP 6

In the window below you should select the following options:

- „Create simCNC desktop shortcut” – a shortcut for simCNC software starting
- „Create CSMIO/IP Uploader desktop shortcut” – a shortcut for CSMIO/IP updates.

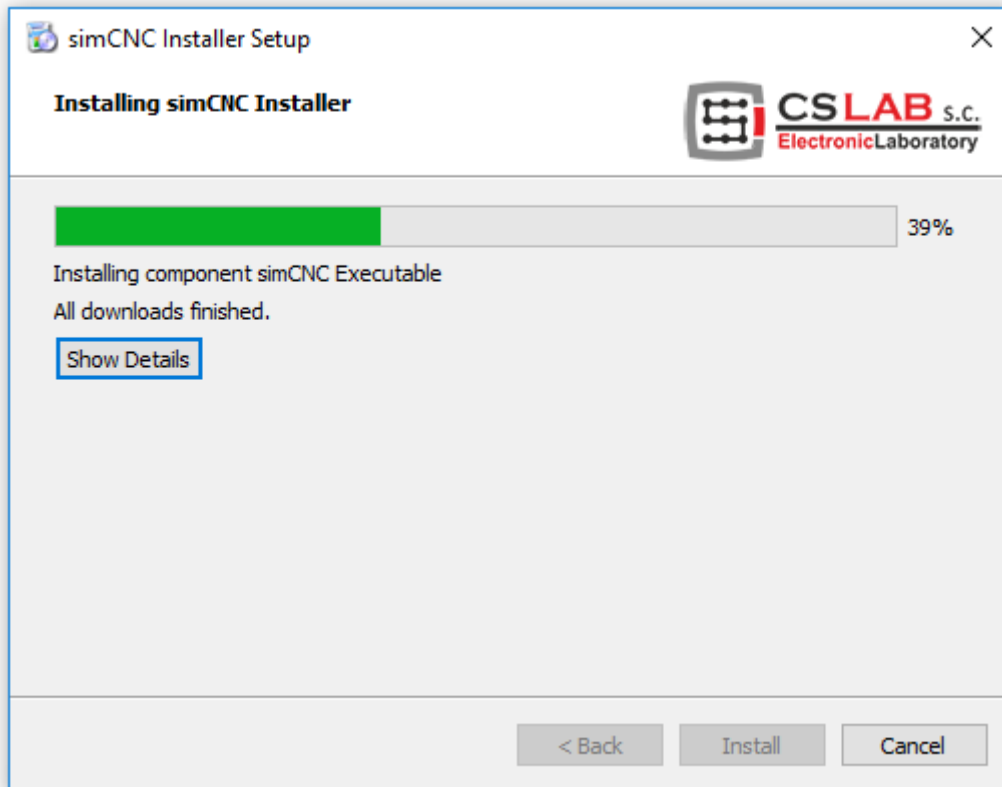
The firmware update is required if you are planning to switch to use CSMIO/IP controller with Mach3 (Mach3 requires firmware version V2 e.g. v2.910 and simCNC requires firmware version V3 e.h. v. 3.08).

Next got to a next window pressing „Install”

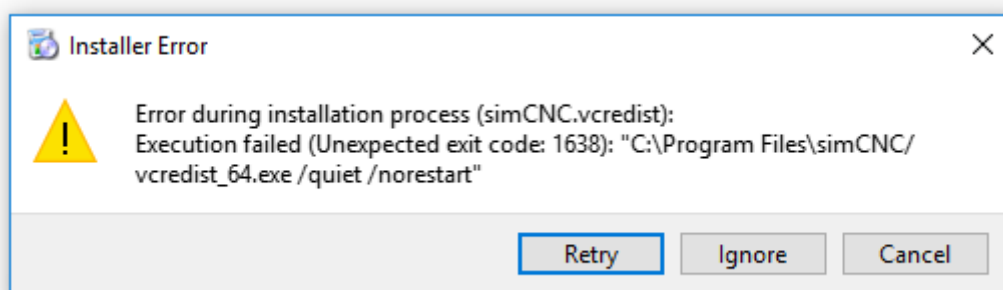


STEP 7

After pressing „Install” you can watch progress of download and installation of all components required for proper simCNC software work.



In case of the installer error shown below press "Ignore". The error is insignificant and does not affect the proper functioning of the simCNC software.

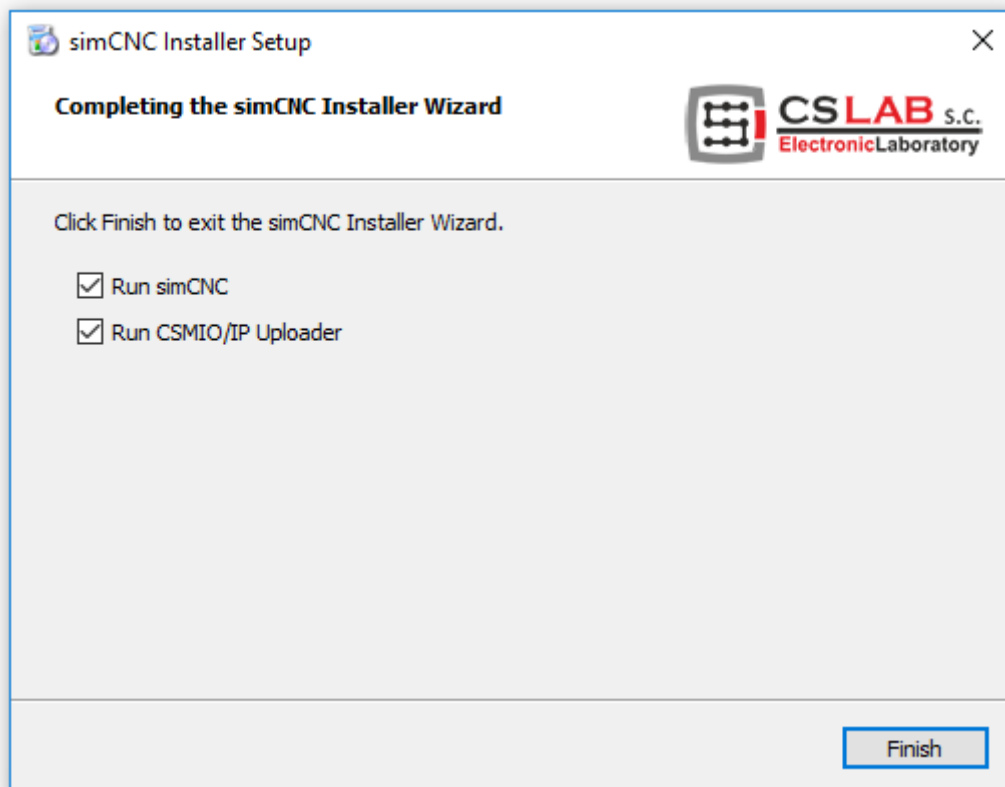


STEP 8

In the window below you should select the following options:

- „Run simCNC” - for automatic start of the simCNC software.
- „Run CSMIO/IP Uploader” - for automatic update of CSMIO/IP update.

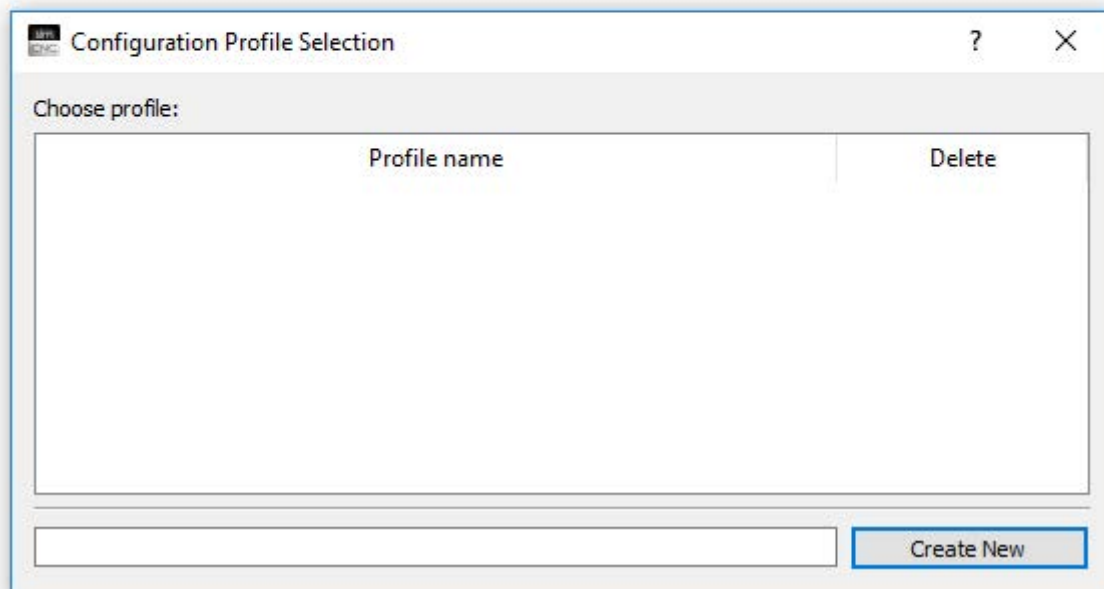
If you won't select these options you will have to later find and run the firmware update utility.



STEP 9

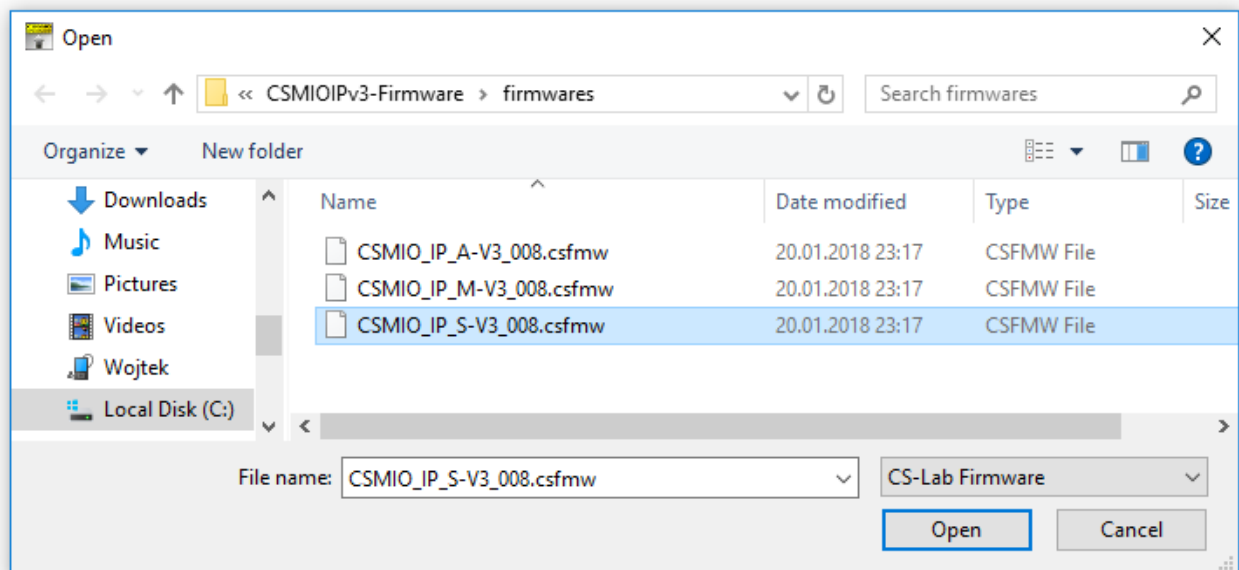
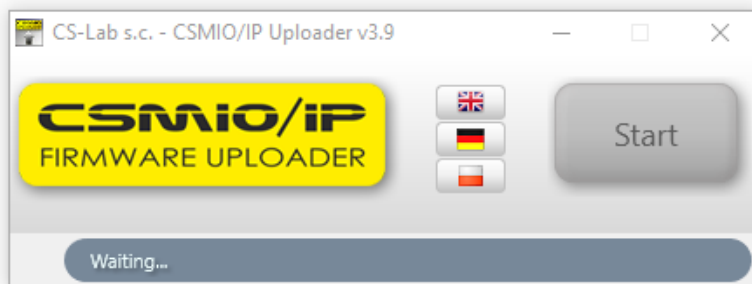
As you have selected the above options you have launched automatic updates for CSMIO/IP firmware and simCNC software.

As for now leave the simCNC software window opened and let's focus on „Uploader v3.9“. If it didn't launch automatically because you didn't want it to or you forgot to select the option before, then now you have to find the utility in Windows installed software list.



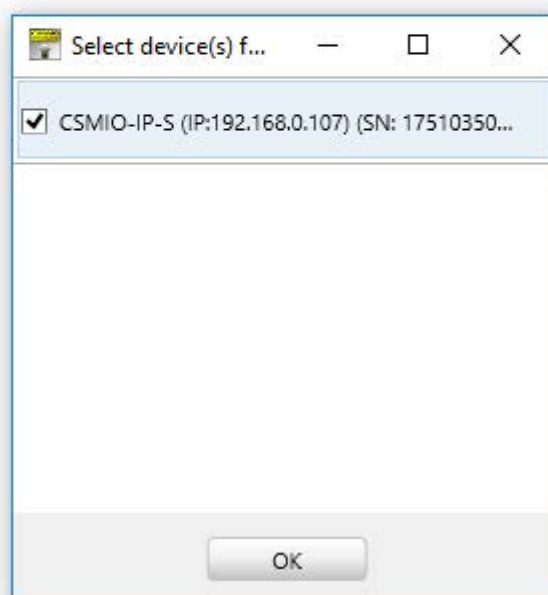
STEP 10

Run the „Uploader v3.9” by pressing „Start”. After that you will see the window where you should select the CSMIO/IP firmware for your CSMIO/IP controller type. As you can see in the picture CSMIO/IP-S firmware was selected in this case.



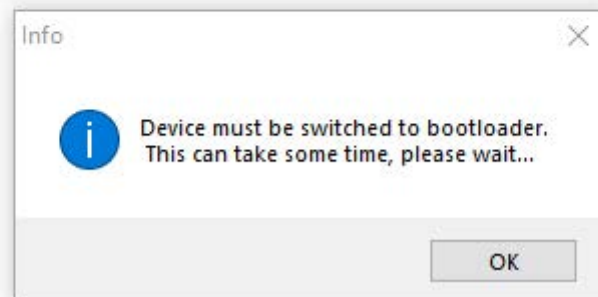
STEP 11

After selecting the proper firmware for your CSMIO/IP controller the „Uploader v3.9” finds the controller and displays its IP address and serial number. If you have selected incorrect firmware mistakenly the „Uploader v3.9” won't find the controller and will stop the update. The next step is to select your controller/s from the list (you can update more controllers at one time) and press „OK”.



STEP 12

Confirm switching the controller to update mode and wait patiently. The controller needs a few moments to restart, be found again by Windows system and run in the update mode.



STEP 13

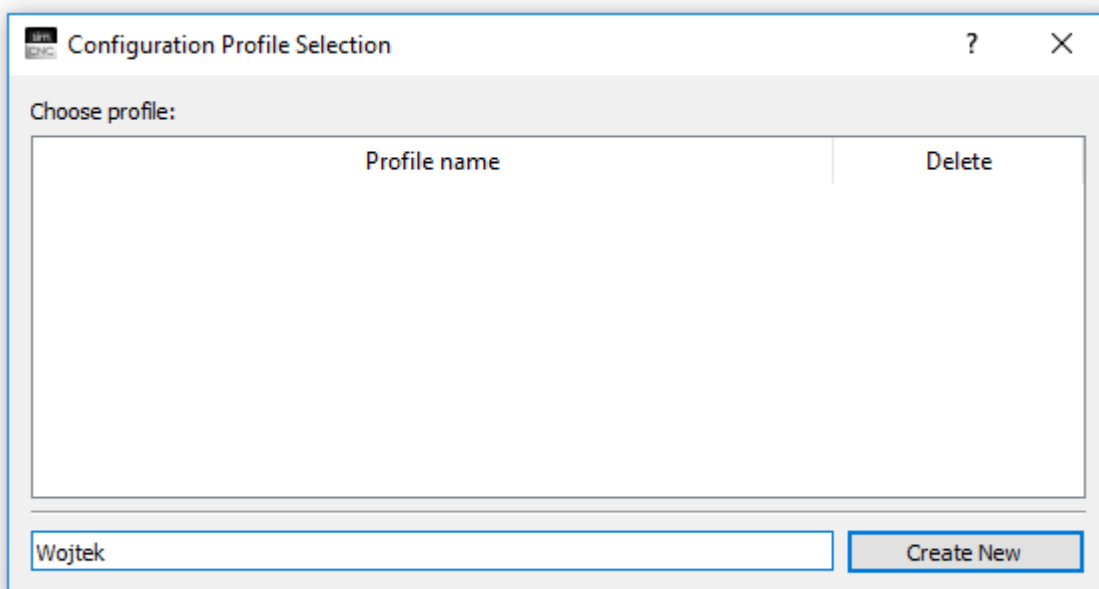
After the switching process is done you can watch the progress line and as it gets 100% you will be informed that the update has finished successful and you you can turn the „Uploader v3.9” off.



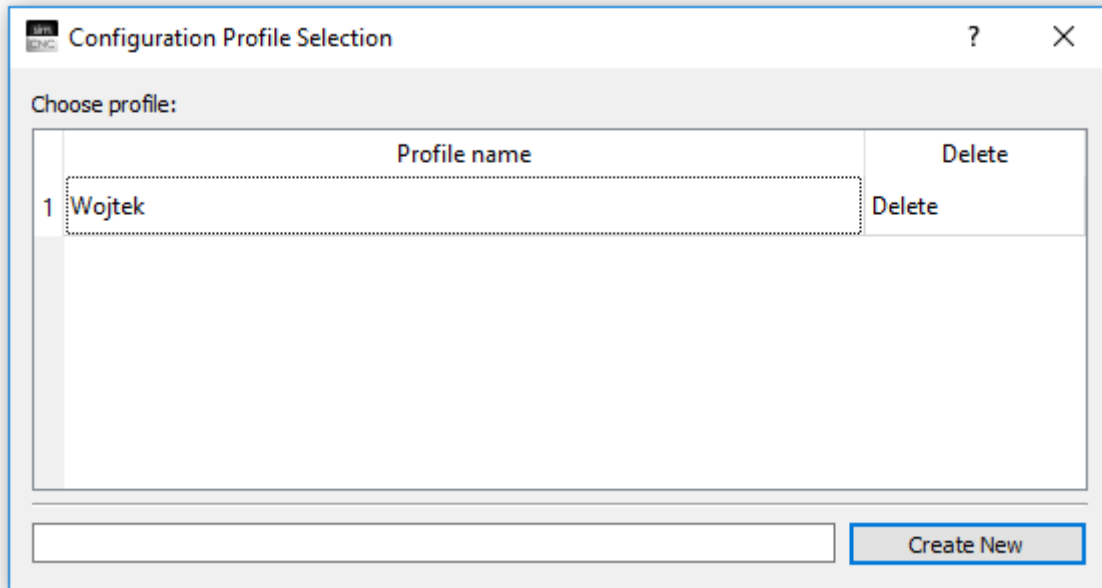
STEP 14

At this moment go to the „simCNC” software window which was previously opened automatically. If it didn't launch automatically because you didn't want it to or you forgot to select the option before, then now you have to find it in Windows installed software list.

As you can see in the picture below the simCNC window has no profile by default so you have to create your profile. After you enter you profile name (in this case it is „Wojtek”) press „Create New”.

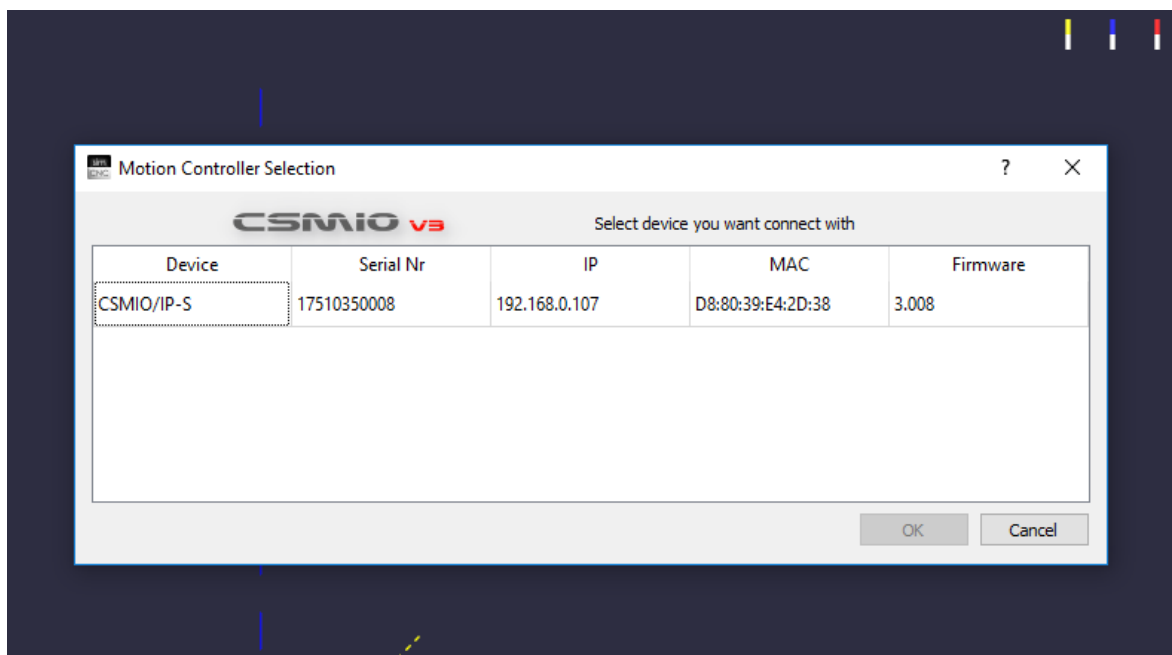


You will see your profile in the list. By double-click you will launch the simCNC software.



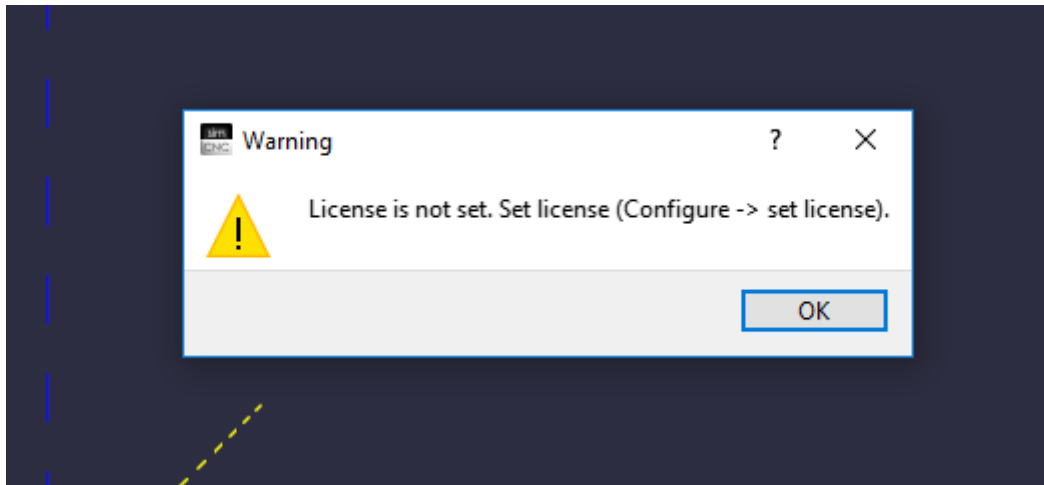
STEP 16

After you start the simCNC software you will see a list of all your CSMIO/IP controllers available in the network. Here you can also find serial numbers and MAC addresses required for simCNC license. You should provide this data when you purchase your simCNC license. As soon as you get the license you should double-click the line with your controller.

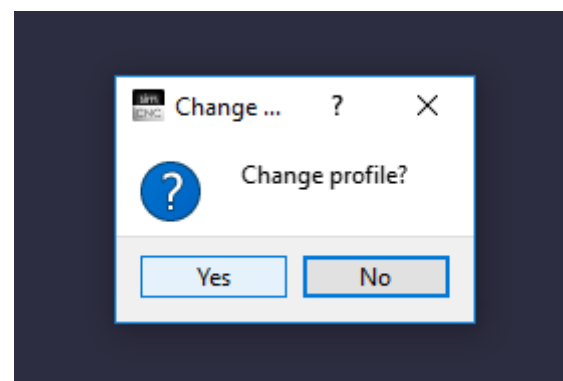
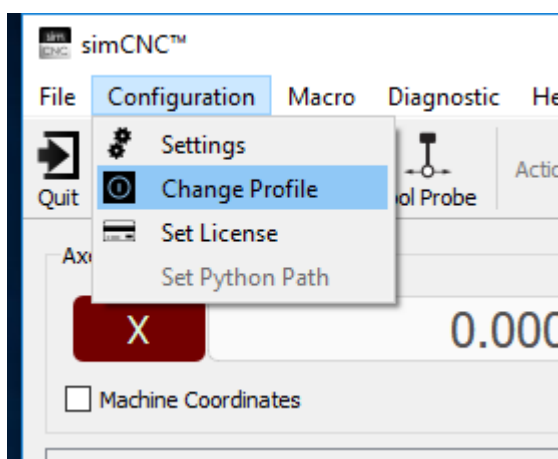
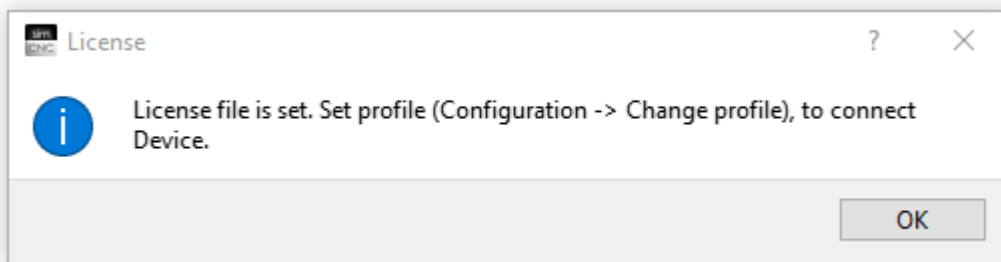


STEP 17

Next you will see the message informing us what to do to set the license. You can also go to Menu - configuration - set license.



Point the license file on your PC. After that you will be asked to load your user's profile again.



After you load your profile again the simCNC software will be restarted. Instead of changing the profile you can also close and run simCNC again. Both ways are correct and give the same result.

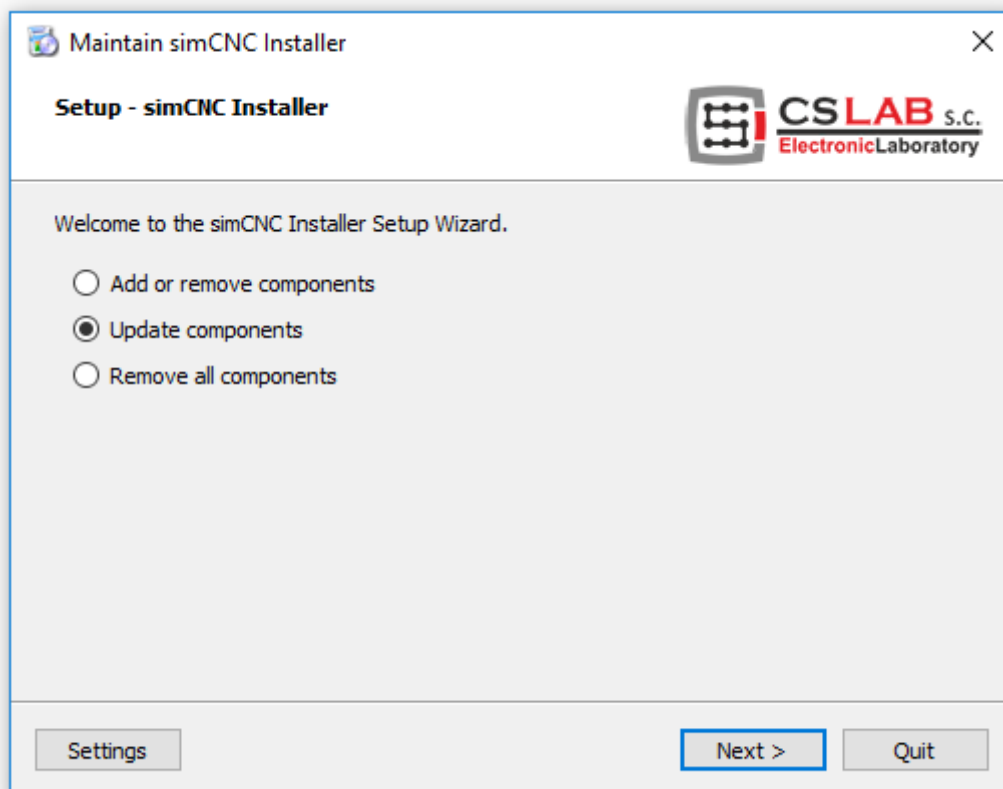
II. SimCNC update

To update or remove "simCNC" you can use a very convenient and fast utility - "simCNC Maintenance" which was installed together with simCNC software.

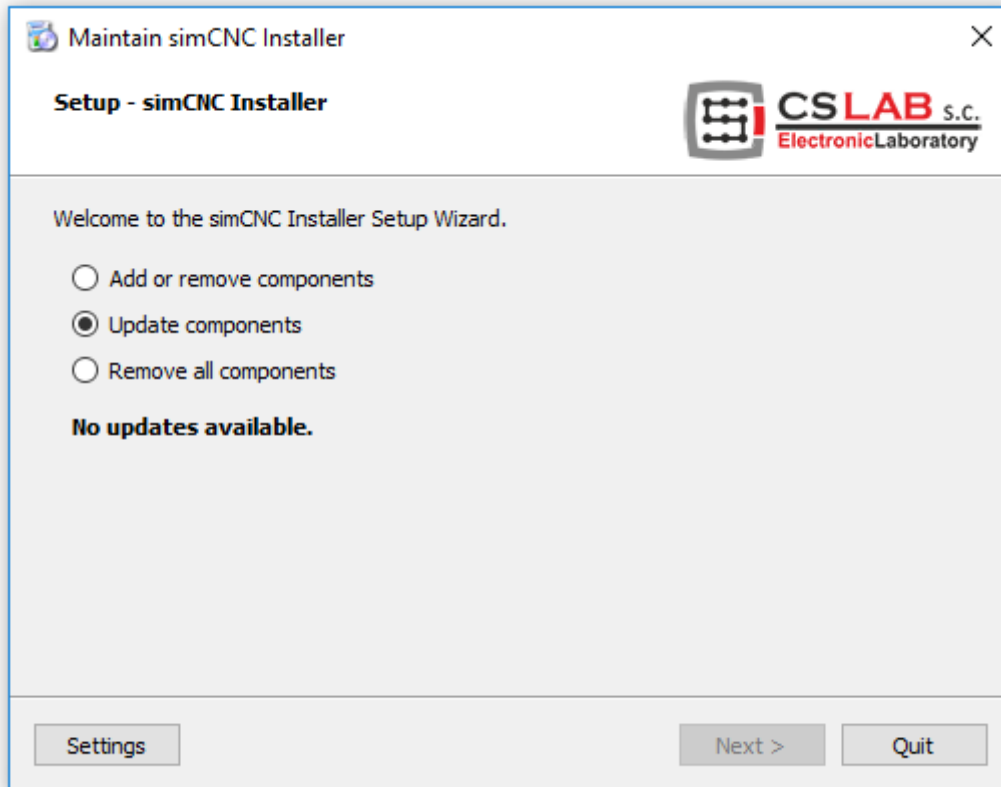
Important!

The "simCNC Maintenance" utility for updates requires internet connection.

To start the "simCNC" update process you should launch the "simCNC Maintenance" utility and select the "Update components" option and press "Next". After that "simCNC Maintenance" connects with server to download and install available updates.

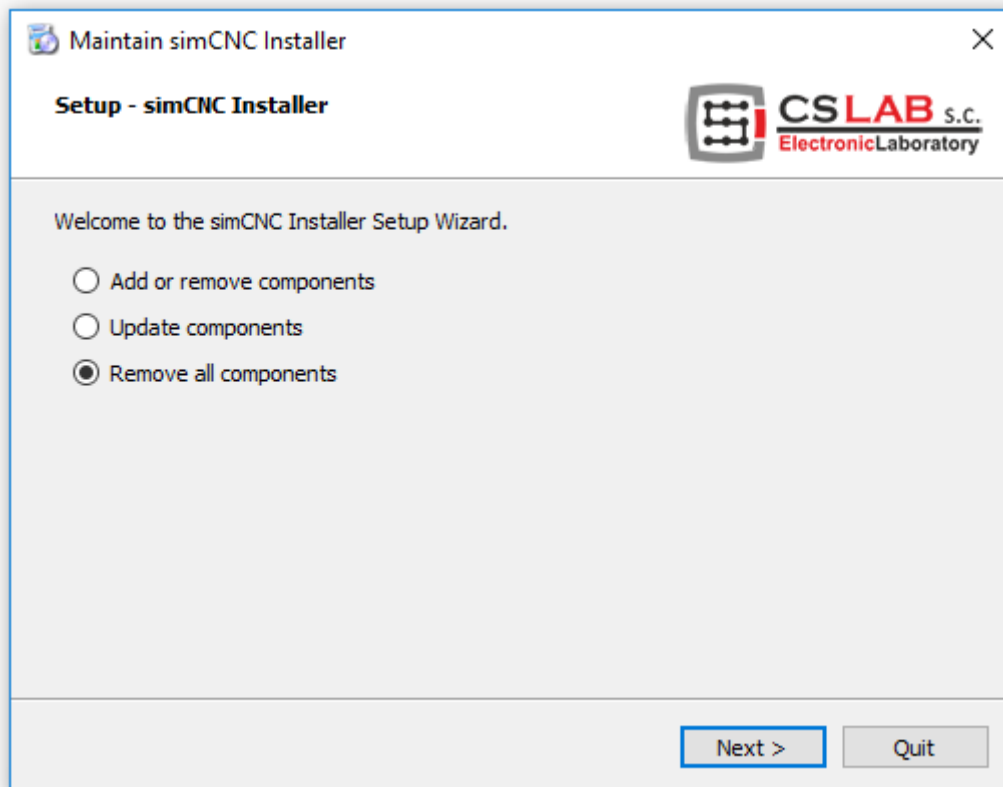


If there are no updates available "simCNC Maintenance" will inform you displaying "No updates available".

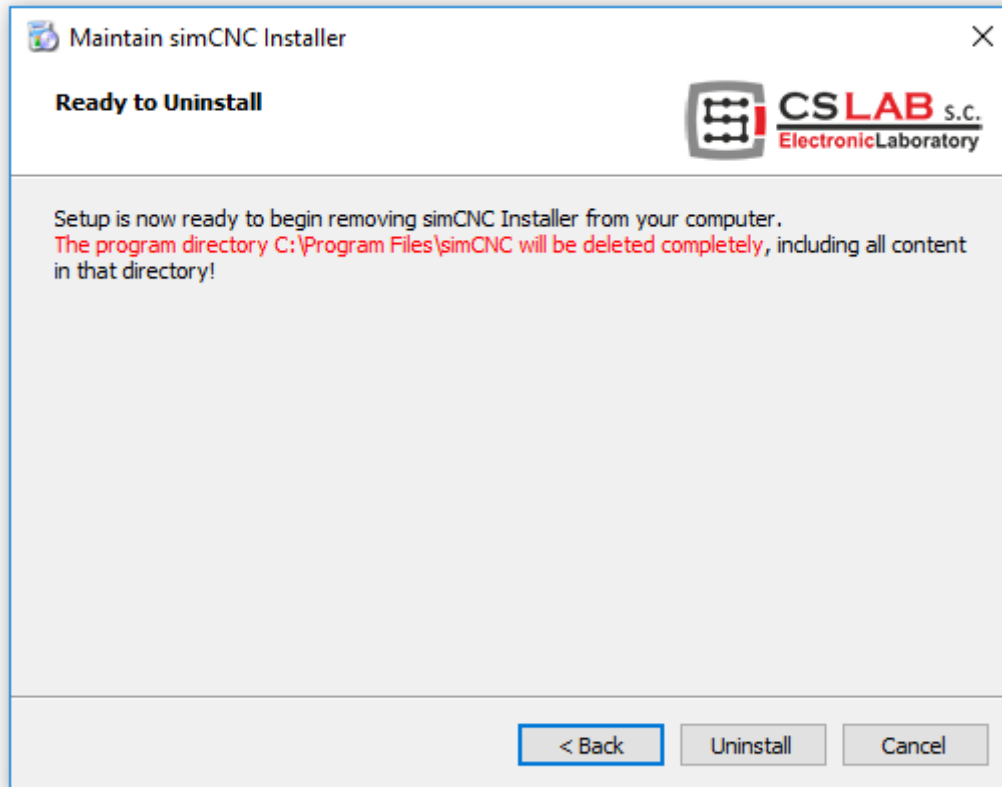


III. SimCNC uninstall

To remove "simCNC" software run "simCNC Maintenance" and select "Remove all components" option and press "Next".



Before "simCNC" software will be uninstalled the "simCNC Maintenance" utility will inform you what components exactly will be removed from your PC. To confirm press "Uninstall".



After the process of "simCNC" software removal is finished you can close the "simCNC Maintenance" utility.

