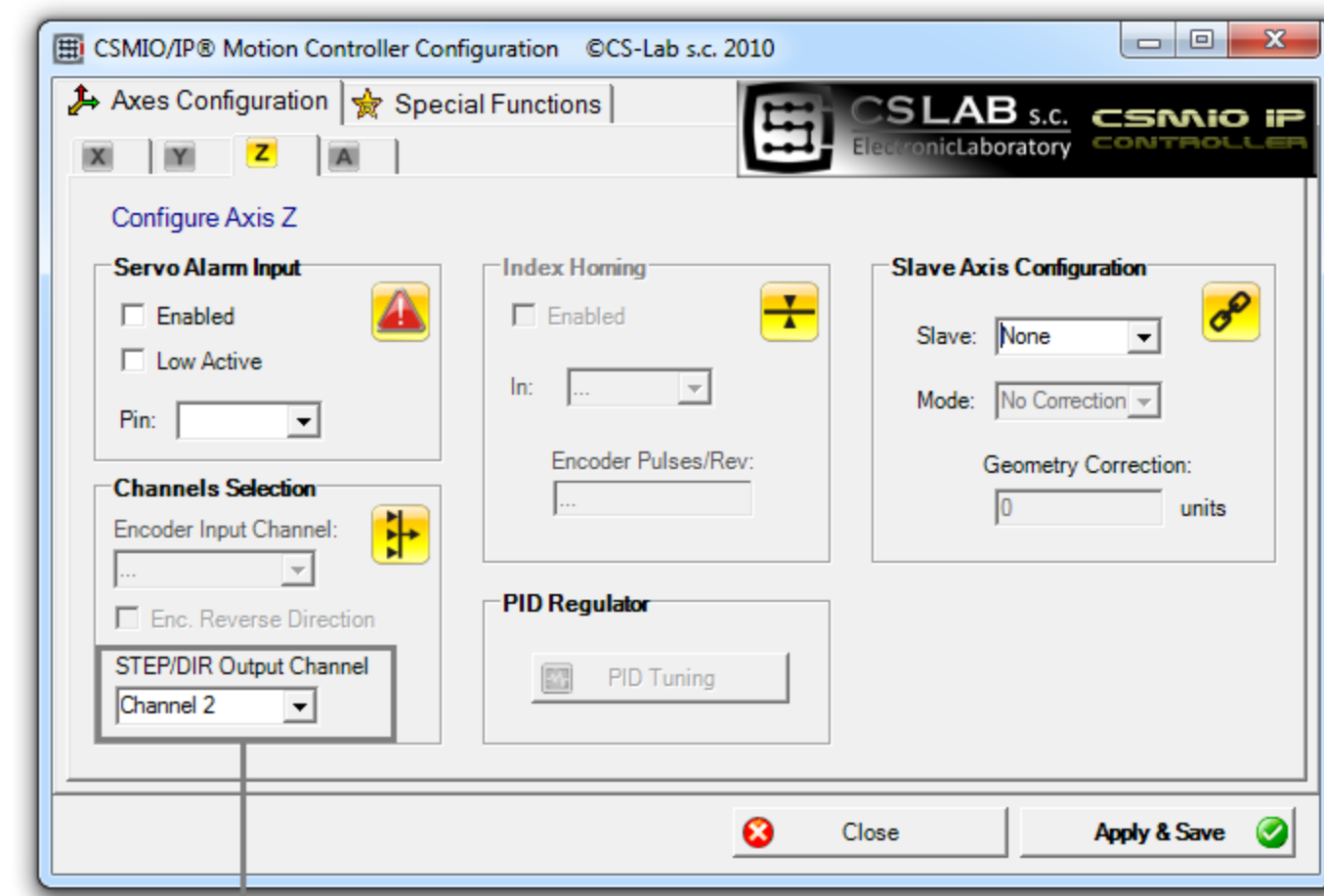
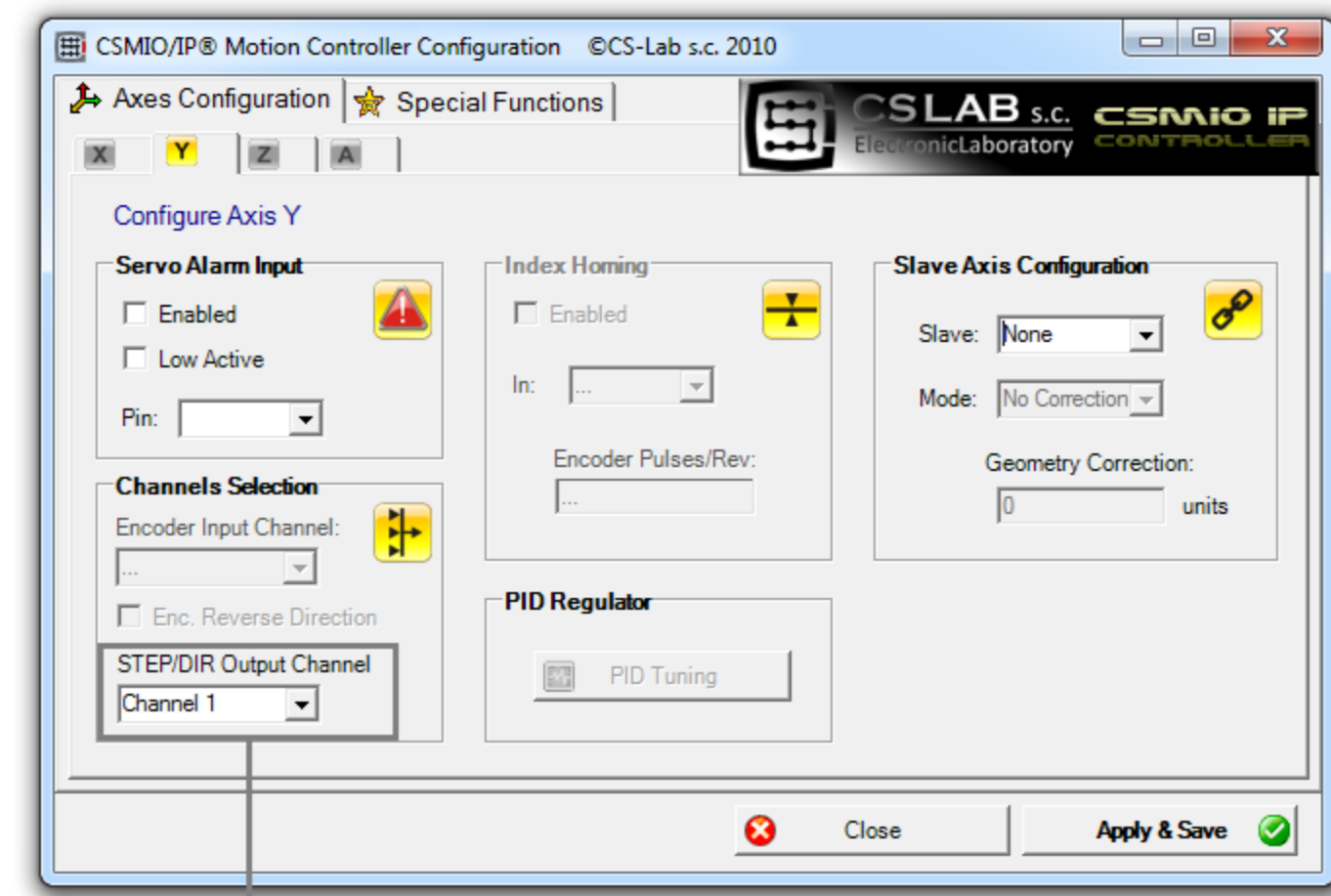
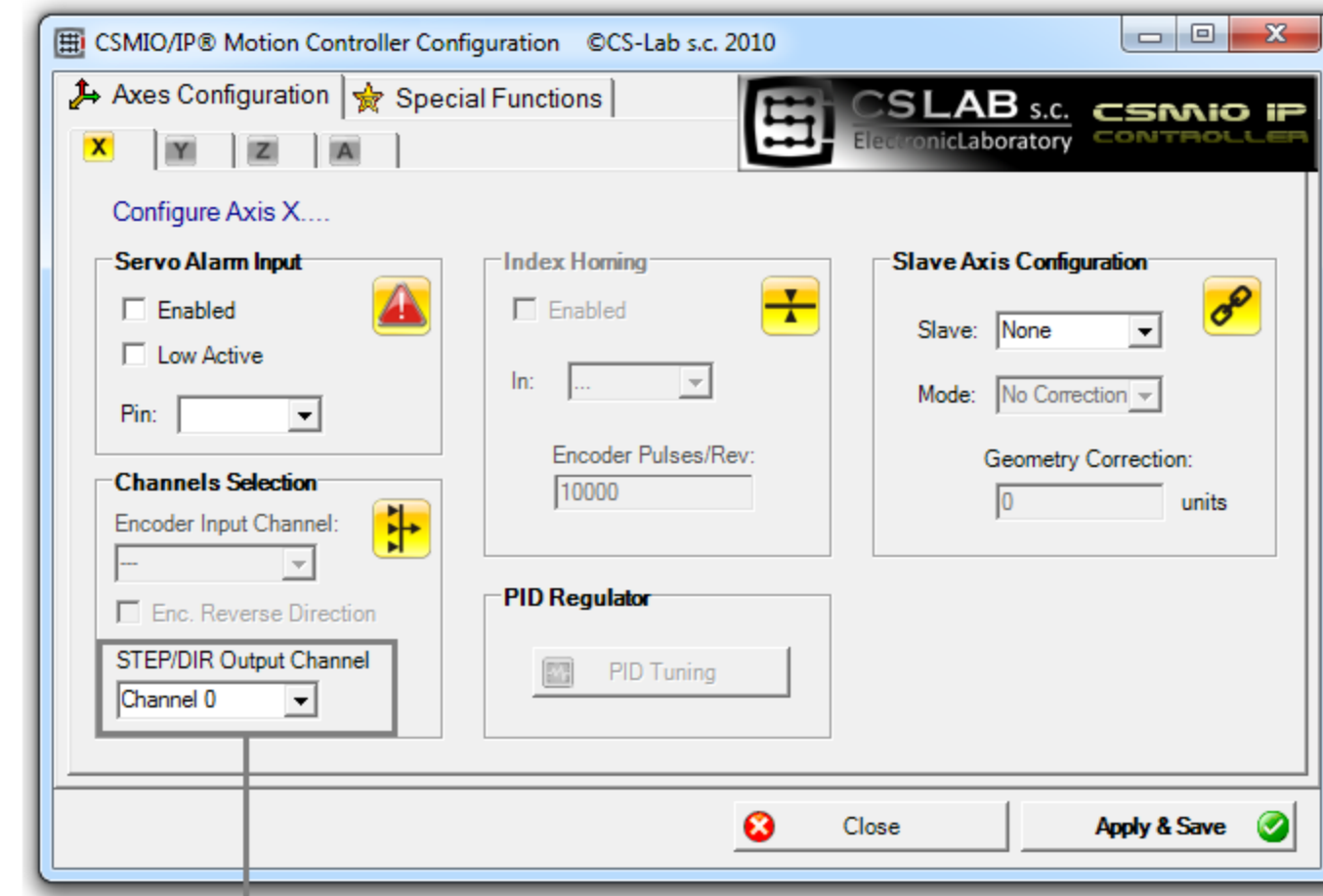


Mach3



Engine Configuration... Ports & Pins

Signal	Enabled	Port #	Pin Number	Active Low
Digit_Trig	✓	1	0	✗
Enable1	✗	1	0	✗
Enable2	✗	1	0	✗
Enable3	✗	1	0	✗
Enable4	✗	1	0	✗
Enable5	✗	1	0	✗
Enable6	✗	1	0	✗
Output #1	✗	10	0	✗
Output #2	✗	1	0	✗

Pins 2 - 9, 1, 14, 16, and 17 are output pins. No other pin numbers should be used.

