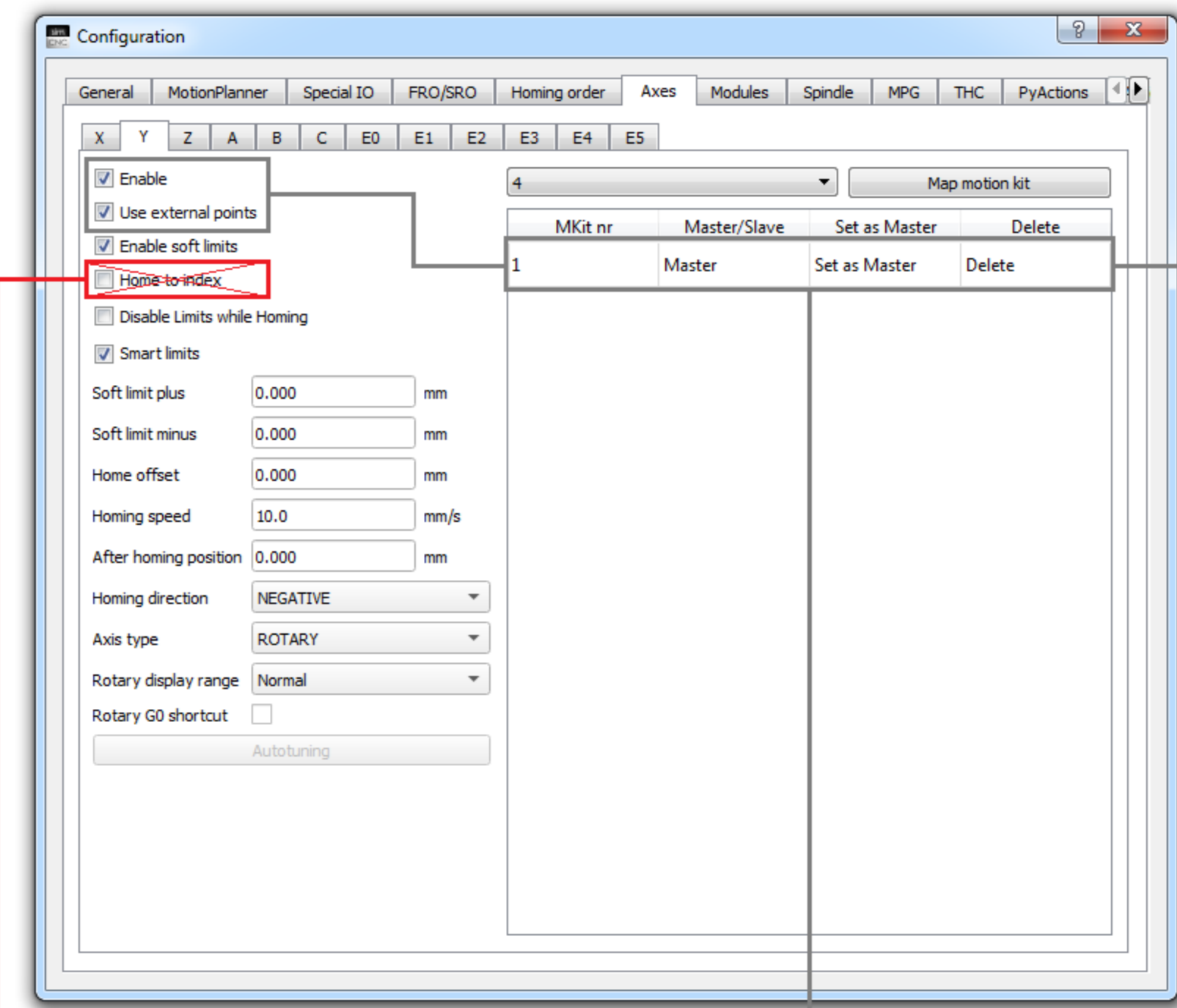
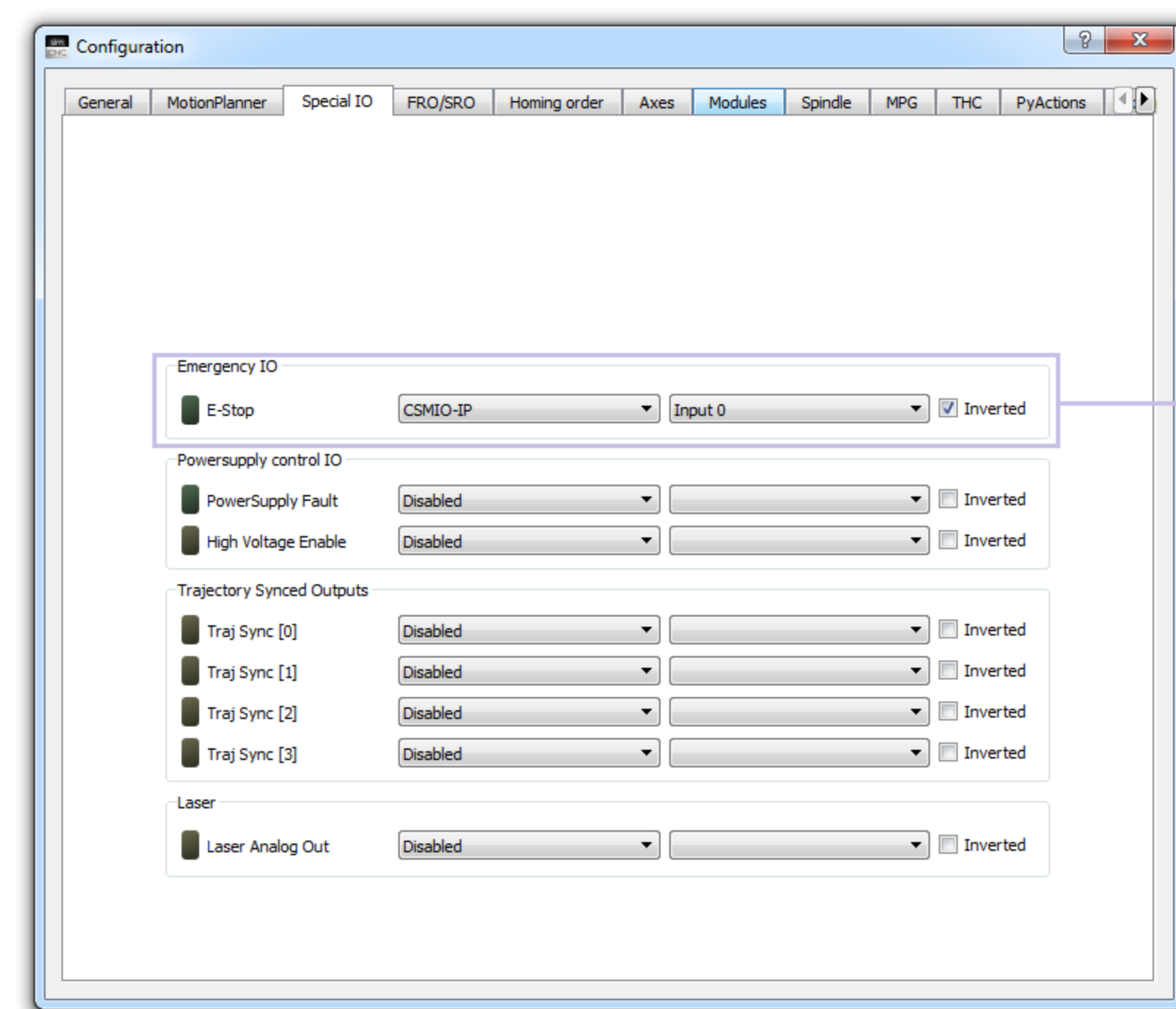
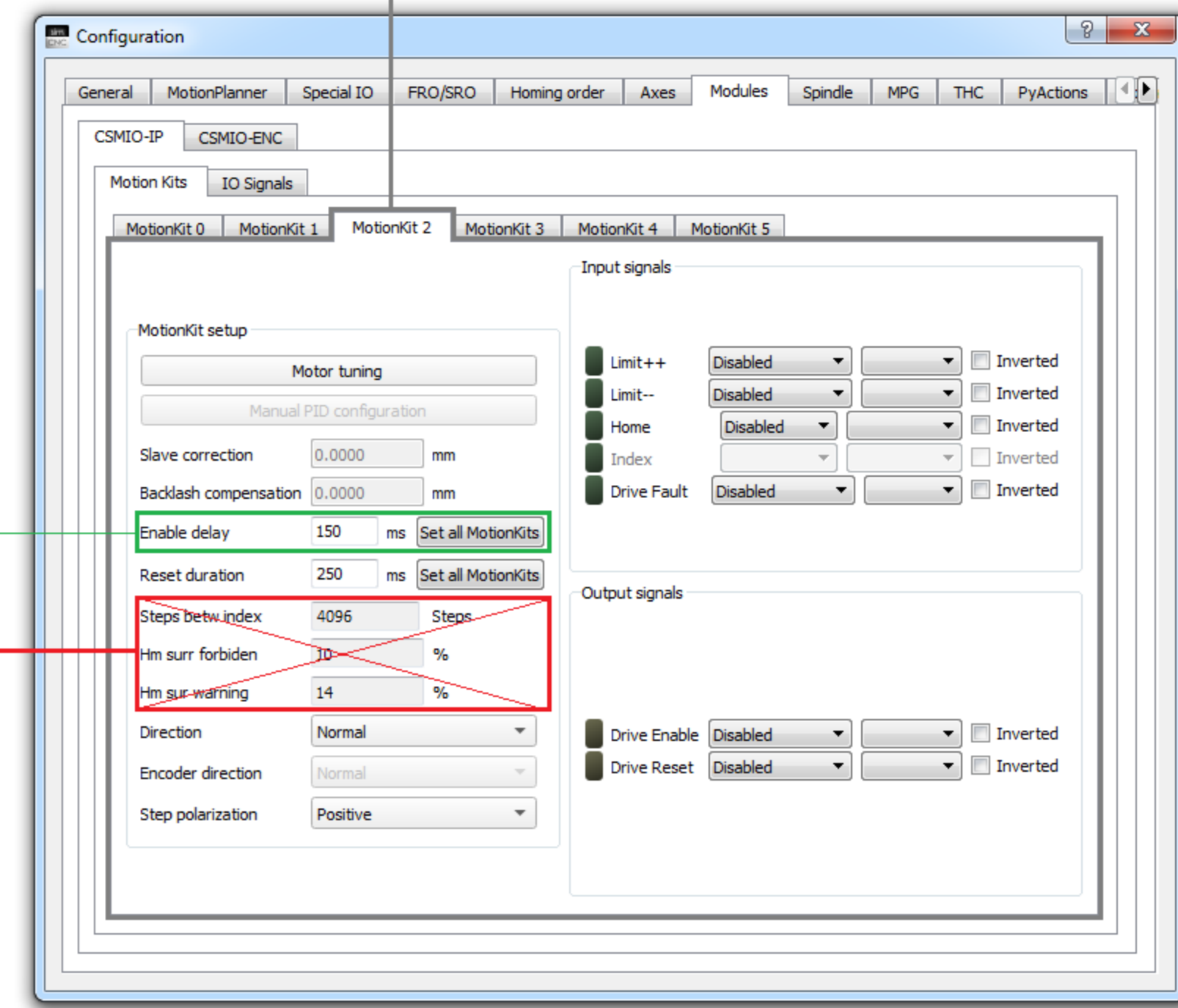
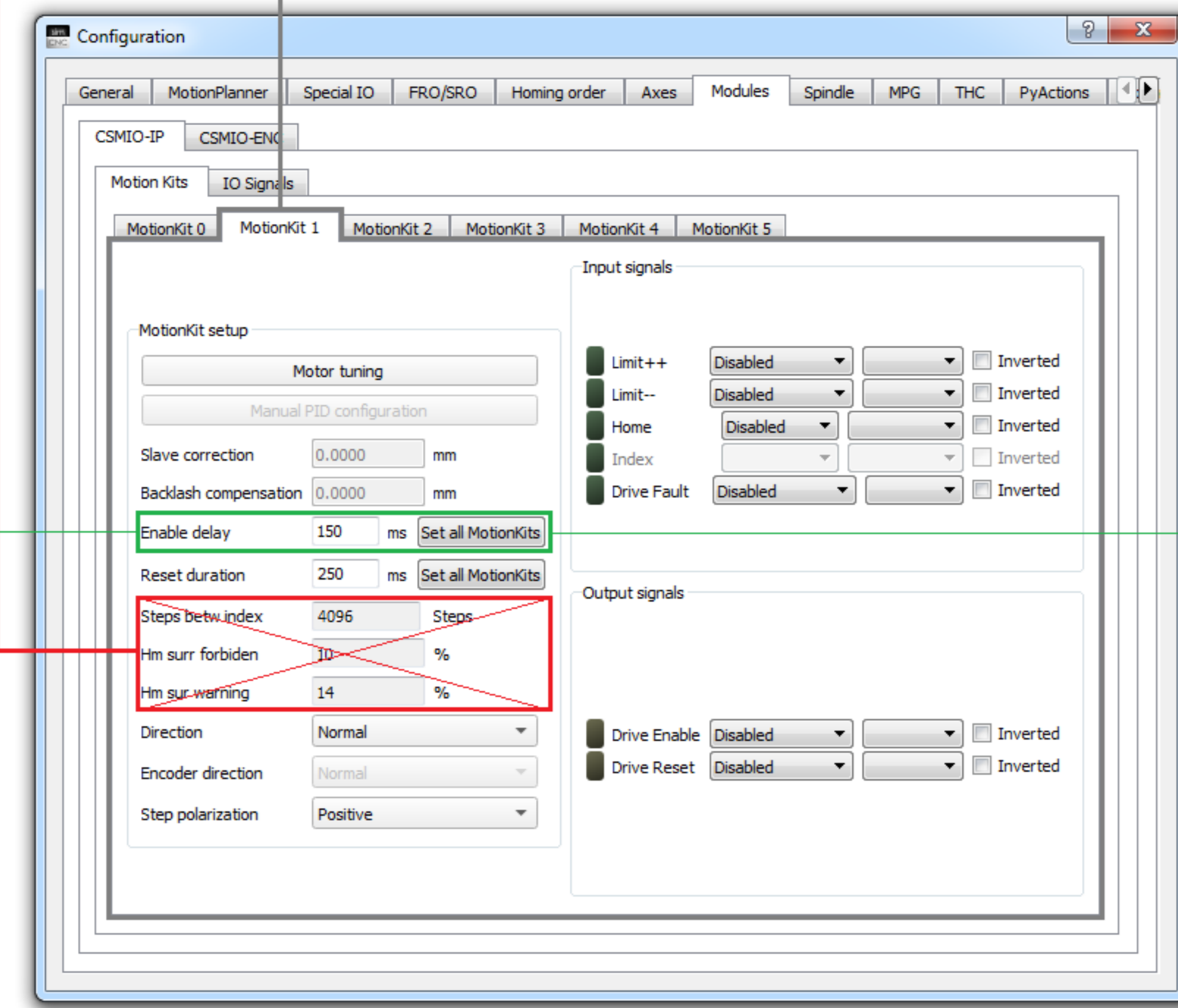
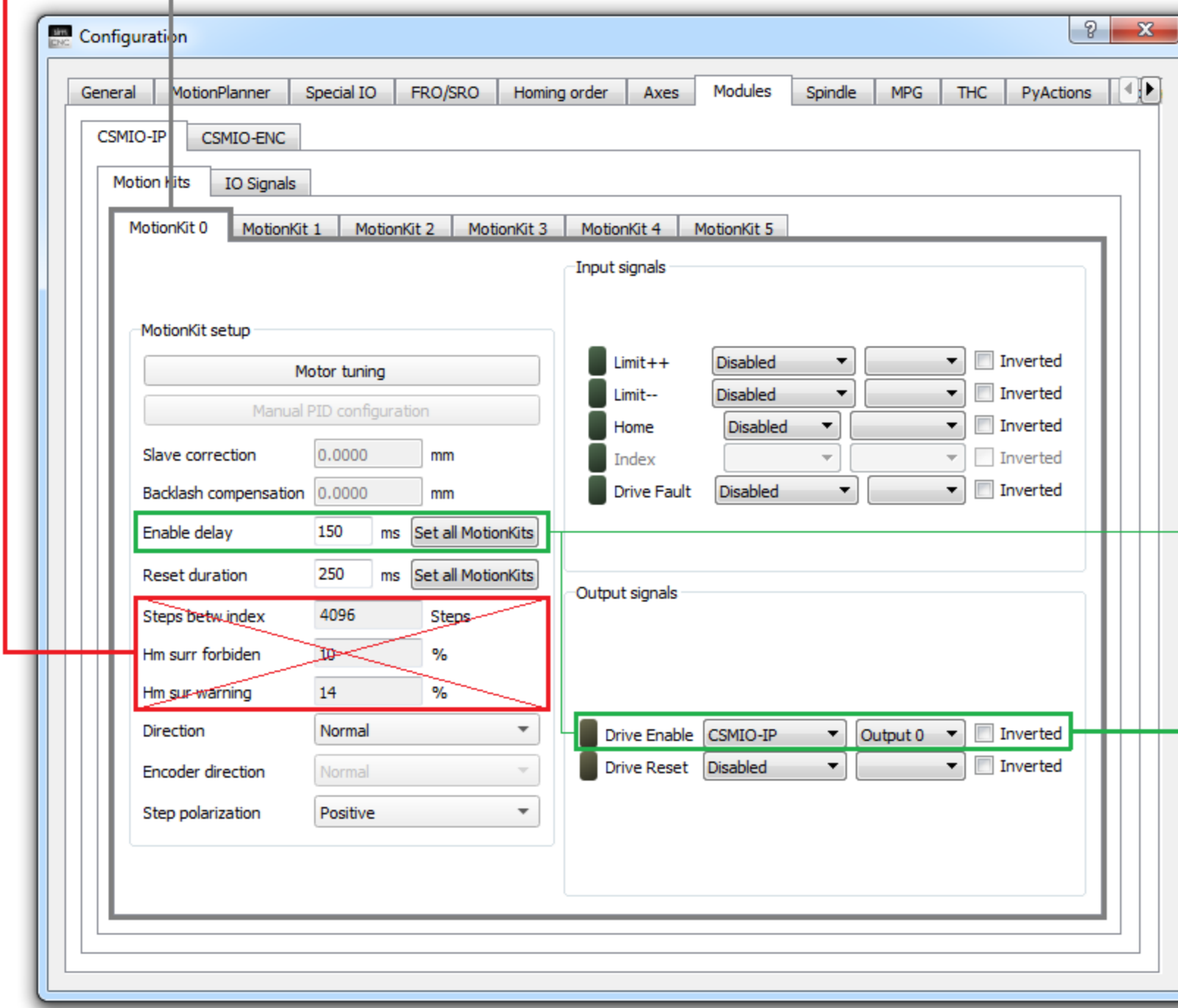
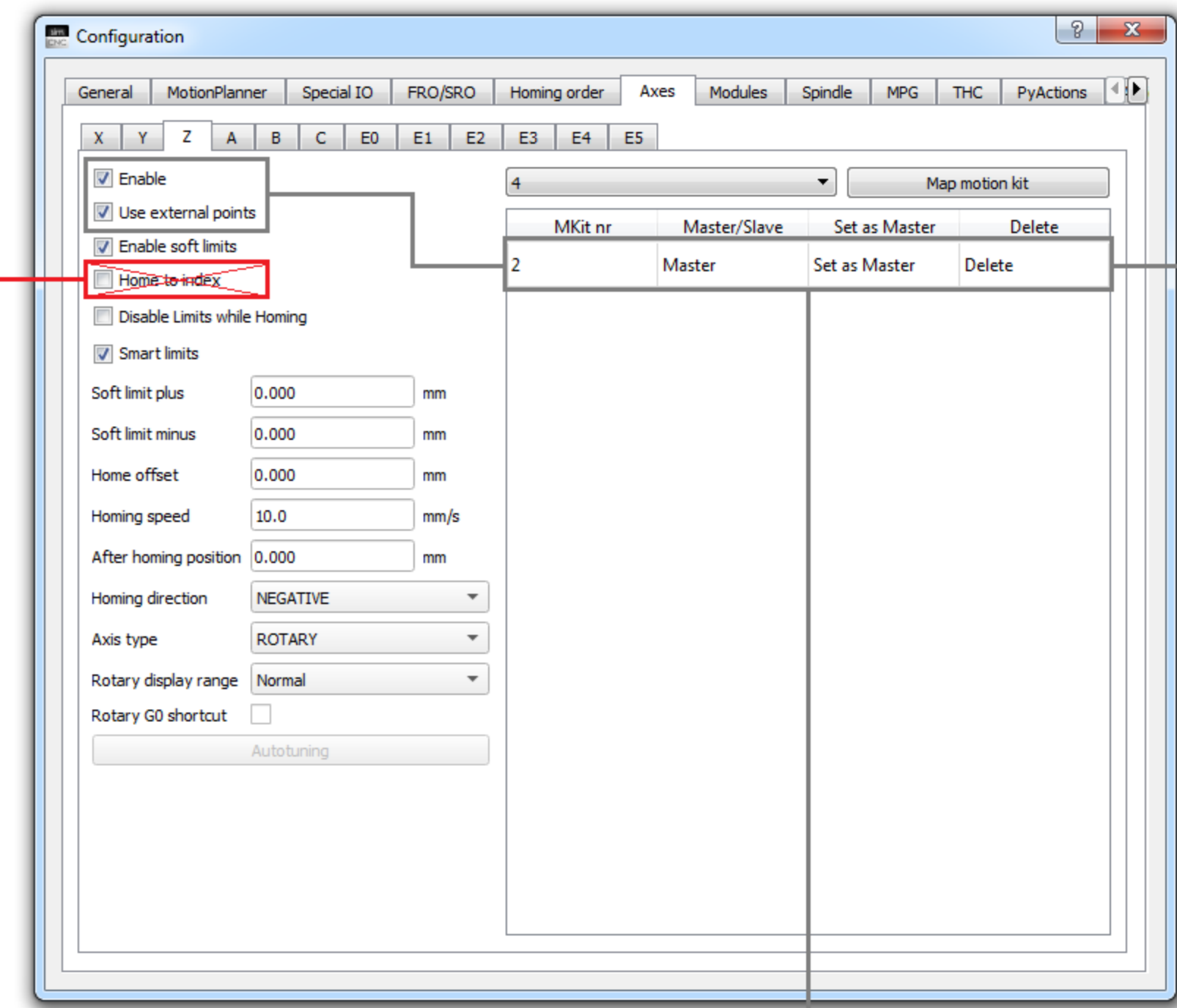


Stepper drives do not support the INDEX signal



Stepper drives do not support the INDEX signal



# CSMIO/IP-S

## Digital inputs connector (0-15)

PIN number	Description
1	Input 0 (+)
5	Inputs 0-7 (-)

## STEP/DIR controlling signals connector

PIN number	Description
14	DIR[0]-
1	DIR[0]+
15	STEP[0]-
2	STEP[0]+

## Digital outputs connector (0-15)

PIN number	Details
1	24V power supply for 0-3 outputs
2	Output 0
14	Power supply 0V for 0-3 outputs

## STEP/DIR controlling signals connector

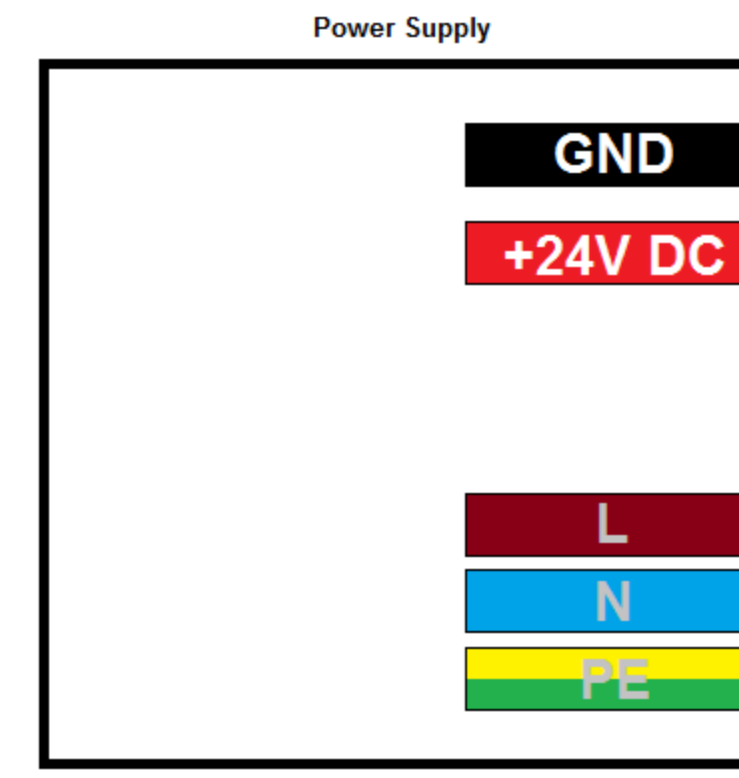
PIN number	Description
16	DIR[1]-
3	DIR[1]+
17	STEP[1]-
4	STEP[1]+

## STEP/DIR controlling signals connector

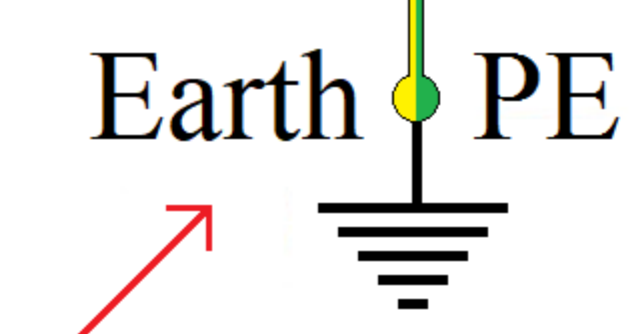
PIN number	Description
18	DIR[2]-
5	DIR[2]+
19	STEP[2]-
6	STEP[2]+

## Power connector

PIN number	Description
1	Power = 24V DC
2	GND
3	ground



Earth Bars  
Listwa uziemiająca



# Leadshine DM870

